

# TDL-2RB

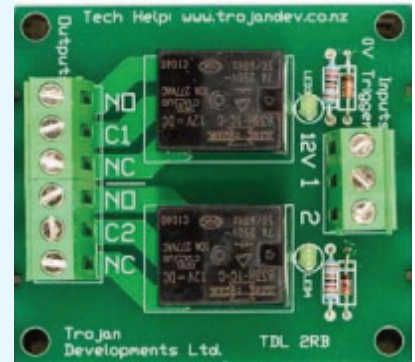
TROJAN DEVELOPMENTS

## Two Way Relay Board SPST

The TDL-2RB is a 2 way 8 Amp Relay Board. It has 2 x 12Vdc inputs that can switch 2 separate single pole double throw relays. The board is designed to fit the TDL Mounting Base, which makes installation very easy and tidy with all cables run behind the PCB with a cover that has an area for labeling. The TDL-2RB can be connected together with other boards to make up a complete system of relays, fuses, timers etc...

## Features:

- ▼ Contacts rated at 8 Amps AC/DC
- ▼ Fits TDL-MB mounting system
- ▼ Modular unit that can be used to switch a number of devices
- ▼ Designed to be used as an interface between a low current switching control board and a high powered lock
- ▼ LED to indicate relay status
- ▼ Raising clamp type terminals will not damage cables and can accommodate up to a 2.5mm<sup>2</sup> cable



## Specifications:

- ▼ Two way Relay Board
- ▼ Operating Voltage 9 to 16Vdc - 38mA at 13.6 Vdc per relay
- ▼ 12Vdc negative trigger input
- ▼ Two Single Pole Double Throw relays
- ▼ Contacts rated at 8 Amps AC/DC
- ▼ Dimensions: 55mm (w) x 60mm (h) x 23mm (d)

## Order Options:

- ▼ TDL-2RB

+64-9-525-7035

▼ [www.trojandev.co.nz](http://www.trojandev.co.nz)

▼ [sales@trojandev.co.nz](mailto:sales@trojandev.co.nz)



*developing innovative access control solutions since 1987*